

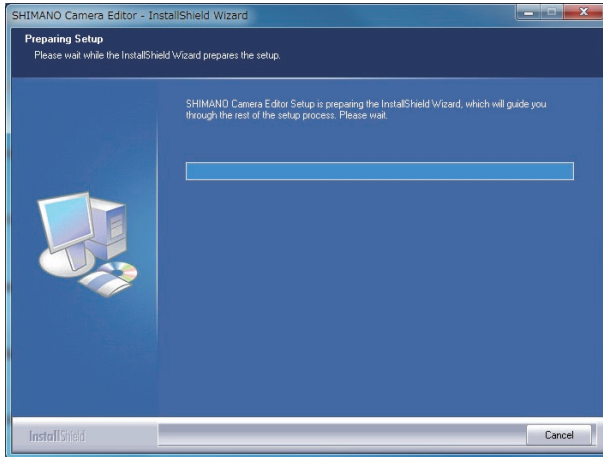
Camera Editor installation manual

Installation procedure | Windows

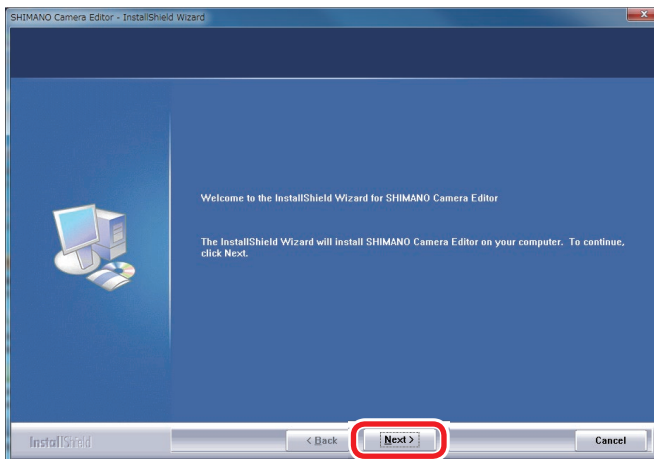
1 Double-click the exe file for which the download location was chosen.

The installer will prepare to install the application.

Once the installer is ready, a dialog box will prompt you to start the installation.

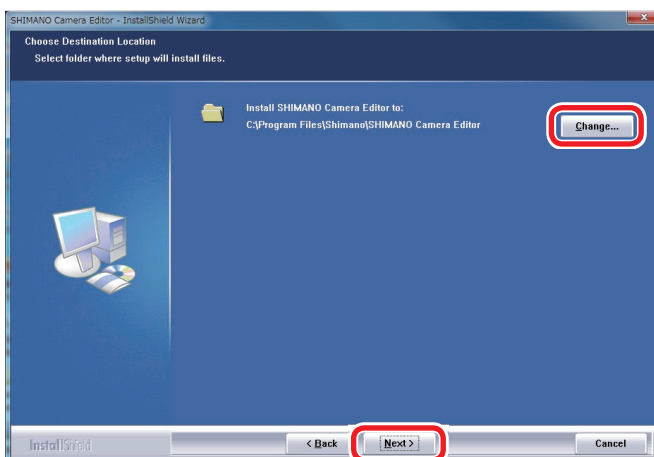


2 Click [Next].



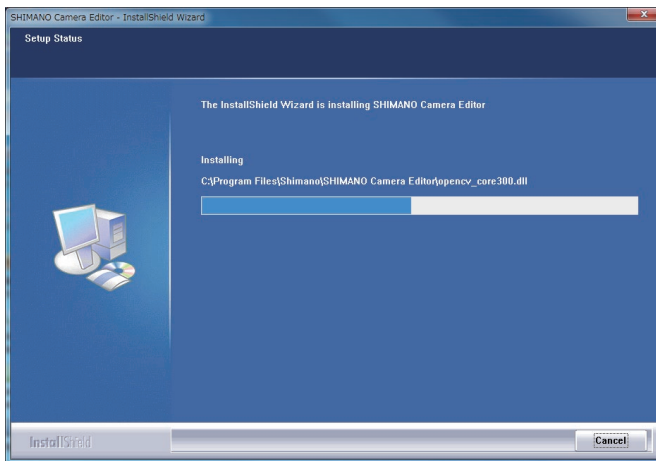
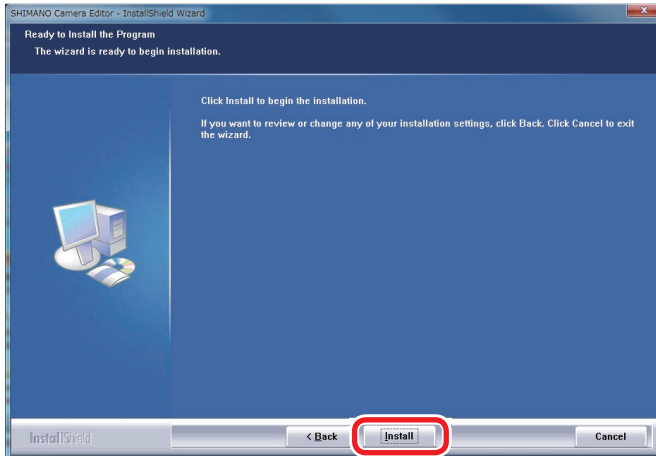
3 Click [Next].

To change the installation location, click [Change] and select a new location.



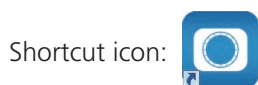
4 Click [Install].

Installation will start.

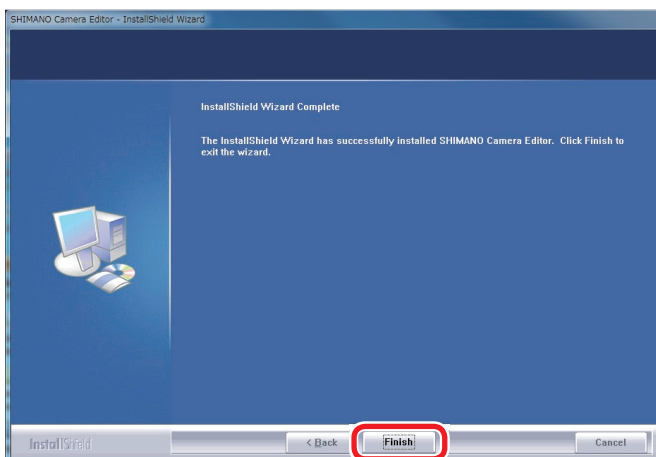


5 Click [Finish] to exit the installation process.

When the installation is finished, a shortcut icon for the SHIMANO Camera Editor will be automatically created on the desktop.



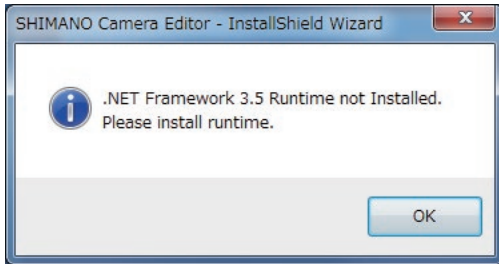
Double-click the icon to start and use the application.



Precautions

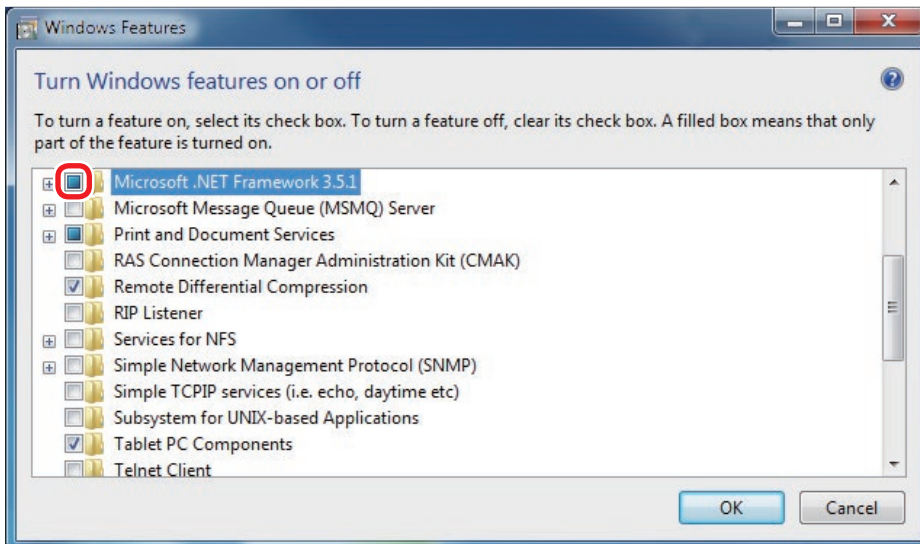
Depending on your computer's setup, the following dialog box may be displayed while the installer is preparing to install the application.

• About .NET Framework

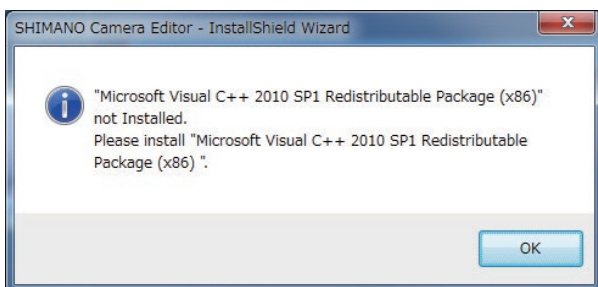


The .NET framework can be configured on the [Turn Windows features on or off] dialog box, accessible as follows: [Control Panel] - [Programs] - [Programs and Features].

Click the checkbox indicated by the red box without expanding the item. (The checkbox can also be clicked after expanding the item.)



• About Microsoft Visual C++



Install the x86 package if you're using a 32-bit operating system, or either the x86 or x64 package if you're using a 64-bit operating system.

Microsoft Visual C++ 2010 SP1 Redistributable Package (x86)
<https://www.microsoft.com/en-US/download/details.aspx?id=8328>

Microsoft Visual C++ 2010 SP1 Redistributable Package (x64)
<https://www.microsoft.com/en-US/download/details.aspx?id=13523>